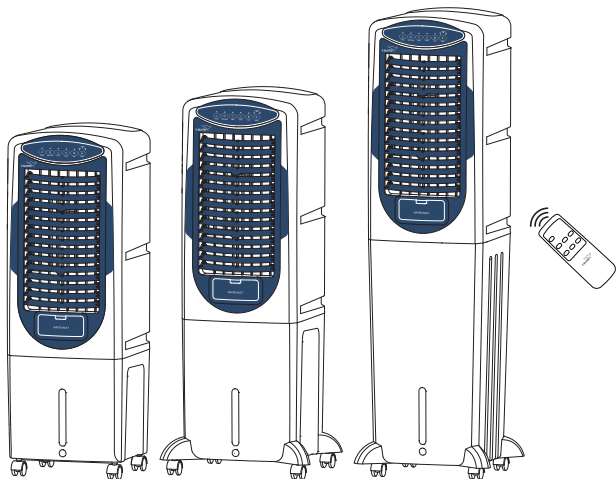


USER MANUAL



V-GUARD AIR COOLER

**TOWER DIGITAL
SERIES**

**EASY REMOTE
OPERATION**

**LOW WATER ALARM
INDICATION**

Dear Customer,

Congratulations!! for being the proud owner of a V Guard Air Coolers. You have made an excellent choice and we hope you will enjoy all its specialities. This product comes to you from a company committed to total quality and dedicated to customer delight since 1977. Every V Guard Air Cooler is brought to you an exhaustive and thorough series of testing procedures those cover every aspect of its functioning, performance and undervaried operating conditions.

TECHNICAL SPECIFICATIONS

Category	Tower		
Model Name	Aikido T25 H NXT	Aikido T35 H NXT	Aikido T50 H NXT
Cooling Media	Cellulose Honeycomb Pad	Cellulose Honeycomb Pad	Cellulose Honeycomb Pad
Supply Voltage	230 V, 50 Hz AC	230 V, 50 Hz AC	230 V, 50 Hz AC
Air Delivery (m ³ /h) [#]	1400	1400	1400
Room Size (sqft). ^{##}	140-165	140-165	140-160
Power Consumption in Watts	130	130	130
Speed Levels	3 Speed	3 Speed	3 Speed
Air Deflection	4 Way	4 Way	4 Way
Water Tank Capacity	25	35	50
Dimensions (W x D x H) cm	34.5 X 35.5 X 92	34.5 X 35.5 X 101.5	34.5 X 35.5 X 125.5

^{##}Standard height of room (H) is 10'. Total air Volume in the room that gets delivered every 2 minutes.

[#]Air delivery is mentioned in cubic meter per hour.

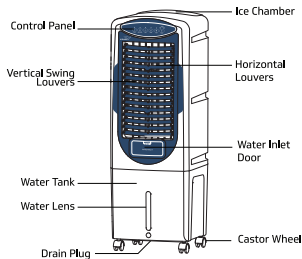
- Safety : Earthing is provided.
- Note : All above mentioned Specifications are under standard test conditions & actual performance may vary as per usage conditions.
- : Design, Specifications & Aesthetics are subject to change without prior notice due to continuous development.
- : Don't use hard water or soap water, which may result in the low performance of the main motor/pump. We recommended to use clean water only.

AIRCOOLER FEATURES

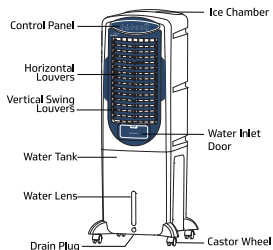
- **Smart Remote control**
Full function remote with wide range of accessibility makes the Air Cooler operate from any point in a room.
- **Superior performance**
2 years warranty on Motor & Pump
- **Smart memory function**
Smart memory function for immediate restart after a power interruption
- **Low Water level Alarm**
Buzzer with RED indication will glow when a low water level is sensed.
- **Digital Display**
Remote & Digital Display provides user effortless operation
- **Best-in-class air delivery**
To feel the blast of cool air up to the extreme end of room.
- **Aerodynamically balanced body**
Provides stability to the product & sturdiness.
- **Tetra air flow cooling**
For equilateral cool air flow to all directions & for more area coverage.
- **Uni-drip flow water distribution**
- **To ensure proper wetting of cooling pads by uniform water distribution.**
- **Corrosion resistant blowers**
To avoid rusting of blower, which will lead to unnecessary service calls.
- **Wide voltage working range (160 V ~270 V)**
Product even runs on extreme input voltage conditions in urban & rural areas.
- **Enhanced protection for main motor & pump**
Safeguard provision against extreme usage conditions & malfunctioning.
- **Inverter compatible**
Works on inverter also to provide uninterrupted cooling
- **Mosquito filter net**
- **3 Pin plug top with earthing wire**
Earthing wire for better safety of Product & usage.
- **Water level indicator**
Easy water level indicator and timely refill reminder to show the water level in the tank without any effort.
- **Higher tank capacity**
Grater storage volume for longer cooling.
- **Free wheeling castors**
Helps easy movement and handling of air coolers.
- **Cord winding provision**

KNOW YOUR V-GUARD AIR COOLER

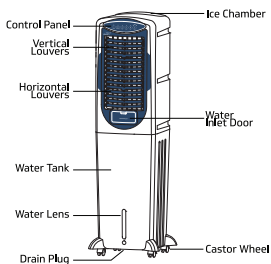
AIKIDO T25 H NXT



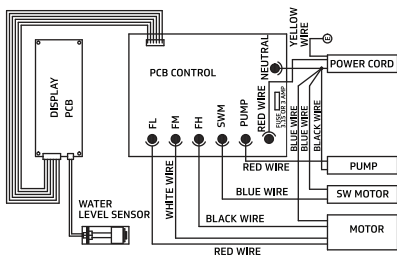
AIKIDO T35 H NXT



AIKIDO T50 H NXT



WIRING DIAGRAM



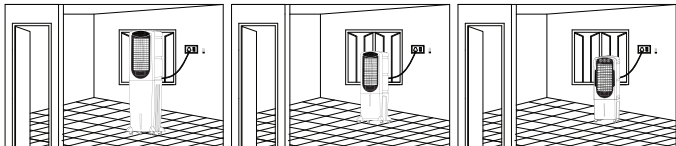
APPLICATION

The Air Cooler is designed to be placed on the ground/floor of the room. The following are some of the applications for which the V GUARD AIR COOLER can be used.

Living Room • Dining Room • Offices • Restaurants • Bed Room • Kitchens • Clinics
 • Study Room • Shops • Balcony • Hotel Rooms.

INSTALLATION

1. Air Cooler should be operated on a flat surface. Try and avoid placing it on an inclined or irregular surfaces for better performance.
2. Place the Air Cooler at least 10 cm away from the wall or any other obstruction. The cooler should be placed near a window/door to allow in fresh air.
3. Always ensure that there is another open window/door through which warm air can exhaust from the room. Cross ventilation is essential for getting the best results from your Air Cooler.
4. Plug in the mains cord of your Air Cooler to a wall socket. The Air Cooler should be connected through shock protection devices, like ELCB and short circuit protection device like MCB.
5. While plugging in the mains cord please ensure that phase (L) & neutral (N) of the mains cord should match with the phase and neutral of the socket as per standard.



OPERATION

1. Install the Air Cooler as per the installation procedure.
2. **Filling of Water:** Just fill the water tank (as per tank capacity) of your Air Cooler through the water inlet port. The water level indicator will show the water level in the tank. It is advisable to use a tumbler to fill the water to ensure no spillage (Ensure the power point is off while filling the water). To obtain chilled air just put ice cubes into the ice chamber at the top of the cooler.
3. **Power Supply:**
Ensure that your Air Cooler is plugged into specified voltage & frequency outlet only. Also ensure proper earthing of power point. Switch 'ON' the power supply.
water if any. Also, 2-3 drain cycles to be carried out on purchase of the air cooler to eliminate smell of honeycomb pads.”
4. **Pre-Soaking:** Before turning ON Cooler fan, it is advisable to run pump for few minutes by pressing MODE function to COOL mode, this will ensure uniform soaking of cooling pad & avoid sprinkling of water if any. Also, 2-3 drain cycles to be carried out on purchase of the air cooler to eliminate smell of honeycomb pads.
5. **Panel Removal/Fixing:**
A. Back Panel - Remove the screws on the back panel to separate the panel from the Air Cooler. While fixing the back panel, position the bottom side first and then fix the screws.
6. **Better Performance:**
For better air blast run the cooler on high speed. Run the cooler on low speed to get better cooling & low noise level.

7. Controls:

Step 1



Step 2 POWER



Press the POWER button to turn the unit ON. To turn the unit OFF, press the button again.

Step 3 SPEED



Press the SPEED button to change the Fan / Blower to high speed and press again to switch to medium speed, low speed respectively & correspondingly green indicators will glow to indicate the selected speed..

Step 4 COOL



Press the COOL button to increase the cooling level of Air Cooler. Ensure that the tank is filled with water at required level before selecting the COOL mode.

Step 5 SWING



Press the SWING button to operate swing mode, Vertical louvers will begin to move left & right automatically.

Step 6 TIMER



This cooler has got 1 - 7 hours of timer level. Press the TIMER button repeatedly to set desired timing level. The specified time will be displayed according to your selected timing level. Once the set time has passed, the unit will automatically shut off. During TIMER operation user can select the desired SPEED level and MODE.

SAFETY PRECAUTIONS

- Always disconnect the mains supply before filling in water.
- Do not fill water beyond the over flow level.
- Do not try to fill water into the Air Cooler while in operation.
- Do not move the Air Cooler rapidly when there is water in the tank.
- Always disconnect the mains before opening the cooling pads and panels.
- Be particular & careful when using the Air Cooler near curtains. Keep safe distance from the curtains.
- Company is not responsible if any shock / injury occurred in case the Air Cooler is not connected through shock protection device like ELCB.
- Children must not be allowed to operate / play with the Air Cooler.
- Alternating current (AC supply) has the potential to induce an EMF in the motor casing. So, it's very important to ground the case with earthing via power cord.

OPERATIONAL CARE AND REGULAR MAINTENANCE

Operational Care

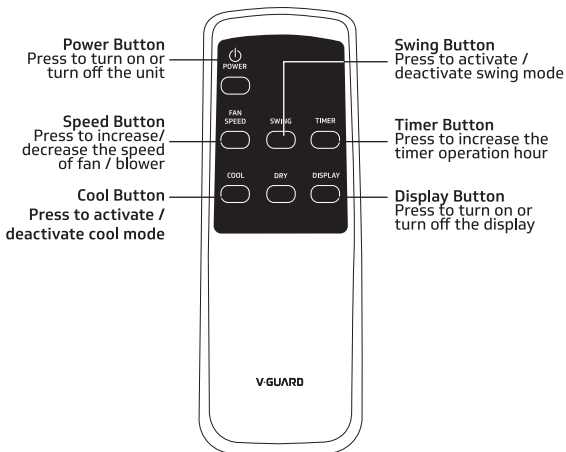
- When your Air Cooler is not in operation, make sure to switch all the switches to OFF position.
- Operate the buttons gently.
- Close the water inlet of the Air Cooler after filling the water.
- Do not wipe the Air Cooler with harsh chemicals, scrubbing powder or thinner as they will damage the body.
- Do not keep any heavy loads on top of your Air Cooler.

- Do not add any bleaching agents/perfumes into the water in the tank as it may reduce cooling efficiency
- Before moving or relocating the Air Cooler, ensure that the mains cord is unplugged and the water tank is empty.
- Do not immerse the unit in water.
- Do not use any cleaning chemicals such as detergents and abrasives.

Regular Maintenance

Periodic maintenance helps to keep your Air cooler in good condition.

- It is recommended to drain the Air Cooler and clean the cooling pads every month.
- Replace the HONEYCOMB PAD once in two/three years.
- After the summer season, ensure that the water is drained off completely & pads are dried before storage.



TROUBLE SHOOTING

If the Air Cooler fails to operate, please check the following before calling for service.

Problem	Possible Cause	Solution
Air Cooler fails to operate/ No discharge of air	Power cord is not plugged in	Make sure that the power cord is plugged in & the supply switch is "ON".
	Power is not "ON"	Try to turn the unit ON by pressing the power button.
	Control panel functions not working / Motor faulty	Contact Customer Care
Not cooling/ Unit is making noise	Low or No water in tank	Refill water tank as per water level and tank capacity.
	Pump is not turning ON	Turn ON COOL function from control panel.
Odour from cooler	When the cooler is new	Cooling media will have an odour which will dissipate within a week of initial use.
	If the cooler has been used, there may be an algae issue	Replace water in the tank. Clean the cooling pad.
Remote control not working	Remote PCB Damage	Contact Customer Care
	Battery orientation changed	Check whether the batteries are correctly inserted according to the + / - orientation
	Battery drain out	Replace the battery



V-Guard Industries Ltd.
Registered Office:
42/962, Vennala High School Road,
Vennala, Kochi - 682028, Kerala, India.
www.vguard.in

SCAN TO AVAIL THE
**DIGITAL
WARRANTY**
BY REGISTERING YOUR
PRODUCT ONLINE



V-Guard Care
0120 485 0100
1860 180 3000
customercare@vguard.in
☎9633503333



Plastic Waste **EPR** Registration Number: **BO-13-000-07-AAACV5492Q-22**