



ARIZOR 5170

INSTALLATION MANUAL

**ELECTRONIC VOLTAGE
STABILIZER FOR
AIR CONDITIONER**

Congratulations on owning a product that is not just thoughtfully designed, but also the most advanced in its category, without a doubt. Every Stabilizer is inspected and tested thoroughly before leaving our premises. We undertake to repair this unit. FREE OF CHARGE for a period of 36 months from the date of purchase, if any defect in material or workmanship occurs. This undertaking does not extend to any equipment for which the voltage Stabilizer is connected.

MODEL	CAPACITY	DISPLAY TYPE	APPLICATION
ARIZOR 5170	15 AMPERE	DIGITAL	ONE INVERTER AC UP TO 2 TON

The most up-to-date design and manufacturing standards make this an ideal guard to your equipment from voltage fluctuations. This unit can withstand up to 320V AC input. Please ensure that excess voltage beyond this level is not fed to the Stabilizer, which can cause serious damage to the Stabilizer and connected equipment, in that case this warranty will be void. This Stabilizer is designed to work up to 50°C ambient temperature. Surge Protection (protect the connected equipment from transient voltage/surge) is available for this model.

Please follow these simple instructions carefully:

Connect the equipment to V-GUARD stabilizer and connect the stabilizer to mains.

This model provided with seven segment display to indicate the status of stabilizer, normally it shows input and output voltages intermittently. When the display shows i/p voltage or o/p voltage, the Stabilizer is feeding normal voltage to your connected equipment. If the display shows 'dLy' or 'Ht-' then the Stabilizer is in restart time delay or High temperature cut-off condition respectively.

Condition	Display Indication	Output Voltage
Normal Input Voltage	IP- (Shows Input Voltage)	Available
Low/High Voltage Cut-off	Lo/Hi	Not Available
Time Delay	dLy	
**Internal Fuse Blown	FLt	
*** Overload Cut-off /No Mains Input	<i>No Display</i>	

**ARIZOR 5170 is provided with an internal fuse protection. If this internal fuse blows, stabilizer will display "FLt" indication and shutdown the output. If your stabilizer is showing this indication, please bring the product to V Guard service centre/Authorized dealer for its re-calibration.

This Stabilizer is provided with an “Intelligent Time Delay System”. Initially when the Stabilizer being in OFF condition for more than 3 minutes, is switched ON within the initial time delay of 3-5 seconds. If the power supply fails and comes back within 3 minutes, there will be a time delay depending upon the period of absence of power. If power failure lasts for more than 3 minutes, the Stabilizer will be switched ON automatically at the arrival of power after initial delay. This allows proper balancing time for the compressor to restart.

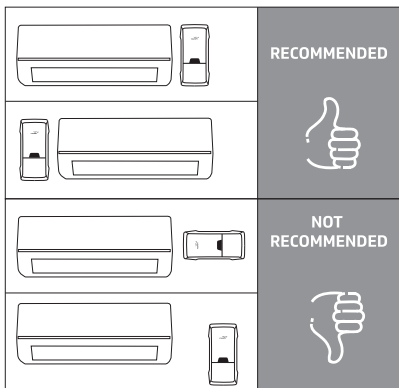
If the line voltage above / below the specified working range, the Stabilizer will not give output voltage. In few places it is likely that voltage remains very low during peak hours of power consumption (between 6 p.m. and 9 p.m.), hence Stabilizer may be in cut-off condition. When the line voltage comes to the working range, the Stabilizer will give output automatically.

***This stabilizer is provided with thermal overload protection feature. When the internal temperature rise of the product exceeds the pre-set limit due to overloading or misbehaviour of connected equipment the protection acts, and stabilizer goes to OFF hence Digital display indications will be in OFF condition. Confirm the connected load draws not more than the rated current of this stabilizer and wait for 10-15 min to restart the stabilizer automatically.

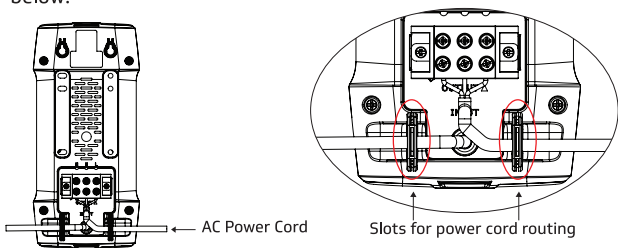
Switch off stabilizer when AC is not in use.

INSTALLATION PROCEDURE

1. This Stabilizer is recommended for indoor use only.
2. It's recommended to mount the Stabilizer in vertical direction and in line with the Air Conditioner as shown below.
3. Locate a place on the wall that satisfies the point No: 2
4. Mount the stabilizer on the wall as per the guidelines in the marking sheet.



5. Connect the Air Conditioner power cord to the Stabilizer output connector. For a better mounting of the Stabilizer in wall, Air Conditioner power cord should be routed through either of the dedicated slots provided in the cabinet as shown below.



6. Ensure the mains supply is in switched OFF position and then connect the Stabilizer power cord to the supply mains. Please be sure that there is no loose connection and proper earthing is provided.
7. Do not cover the Stabilizer with cloth or any other material and be sure that proper ventilation is provided for Stabilizer
8. Now you can switch ON the mains. Stabilizer will be turned ON automatically after the respective time delay.



V-Guard Industries Ltd. ,

Registered Office: 42/962,
Vennala High School Road,
Vennala, Kochi - 682 028, Kerala.
Ph: 0484-2005000, 4335000

SCAN TO AVAIL THE
**DIGITAL
WARRANTY**
BY REGISTERING YOUR
PRODUCT ONLINE



V-Guard Care
0120 485 0100
1860 180 3000
customer@vguard.in
☎ 9633503333



www.vguard.in/home/customer-care
CIN: L31200KL1996PLC010010