

# Non-stop power. Non-stop happiness.

V-Guard Inverter & Battery.



V-Guard Industries Ltd.,  
Registered Office: 42/962,  
Vennala High School Road,  
Vennala, Kochi - 682028, Kerala.  
Ph: 0484-2005000, 4335000  
[www.vguard.in](http://www.vguard.in)



V-Guard Care  
1800 103 1300 (Toll Free)  
1860 180 3000 (Charges Apply)  
[customercare@vguard.in](mailto:customercare@vguard.in) | [www.vguardservice.in](http://www.vguardservice.in)  
CIN: L31200KL1996PLC010010

CNM/JANUARY/2021





## Synergy Smart Series



AN INVERTER WITH MANY SMART FEATURES

## Synergy Smart 1150



### Speciality

- Smart mobile phone App.
- Monitoring and control of DUPS through Wi-Fi and Bluetooth.
- Voice controlled through Amazon Alexa & Google Home.
- Monitor daily solar consumption.
- Equipped with inbuilt high efficiency charge controller with 600 Wp solar panel compatibility.
- Digital Signal Controller based design for Pure Sinewave output.
- Selectable charging mode for different battery technologies (Tubular Battery / Flat Plate Battery / Local Battery) and capacities (80 to 230 Ah).

SL. No.	Specification	Values
1	Power Rating (VA / W)	950VA / 750W
2	Nominal Output Voltage at No Load in Normal Mode	220V ± 5VAC
3	Nominal Output Voltage at No Load in UPS Mode	230V ± 5VAC
4	Output Waveform ( Backup Mode)	Pure Sinewave
5	Output Frequency (Backup Mode)	50Hz ± 0.5Hz (In Normal / UPS Mode)
6	Normal Mode Mains Input Range in system ON Mode	90V To 290V ± 10V
7	UPS Mode Mains Input Range in System ON Mode	180V To 260V ± 6V
8	EQP Mode Mains Input Range in System ON Mode	140V - 260VAC ± 10V
9	Output Voltage (ON Mains Mode)	Same as Input Voltage
10	Normal Mode Transfer Time in System ON Mode	<20 mS
11	UPS Mode Transfer Time in System ON Mode	≤10 mS
12	Nominal Voltage, Recommended Battery	12V, 12V / 80Ah - 230Ah, 1No Lead-Acid Battery
13	Charging Current in Normal Charging Mode	10A ± 1.5A DC (By Back Side Selection Switch)
14	Charging Current in High Charging Mode	15A ± 1.5A DC (By Back Side Selection Switch)
15	Protections in Backup & Mains Mode	Over Load, Short Circuit, Input, Battery Low Voltage, Mains Voltage Low/high, Mains Input Frequency Low/high Cut Off, Mains RCB Trip, Heat Sink Over Temperature, Battery Over Charging
16	USB Charger Voltage	5.0V DC ± 0.2V DC, Emergency power to charge your mobile even after inverter fully off after low battery protection.
17	USB Charger Current Capacity	1A ± 0.2A
18	Short Circuit Protection	Provided with one retry
19	Generator Compatibility	Provided
20	Warranty	2 Years
21	Solar PV Maximum Voltage	25 VOC
22	Solar PV Maximum Current	25 A ± 2 A
23	Solar PV Maximum Wattage	640 Wp
24	Applications	LED TV (up to 55"), Fan, EESL LED Bulb, CFL, Tube Light, Inverter Refrigerator (up to 320 Litre), Mixer (up to 750W***), Room Cooler (up to 250W), Sound Bar / Speaker System, 0.5HP Monoblock Self Prime Pump, Kitchen Chimney (up to 1200 m³/hr), Desktop Computer, DeskJet Printer, Playstation



## Synergy Smart 1800



### Speciality

- Smart mobile phone App.
- Monitoring and control of DUPS through Wi-Fi and Bluetooth.
- Voice controlled through Amazon Alexa & Google Home.
- Monitor daily solar consumption.
- Equipped with inbuilt high efficiency charge controller with 1200 Wp solar panel compatibility.
- Digital Signal Controller based design for Pure Sinewave output.
- Selectable charging mode for different battery technologies (Tubular Battery / Flat Plate Battery / Local Battery) and capacities (80 to 230 Ah).

SL. No.	Specification	Values
1	Power Rating (VA / W)	1550VA / 1350W
2	Nominal Output Voltage at No Load in Normal Mode	220V ± 5VAC
3	Nominal Output Voltage at No Load in UPS Mode	230V ± 5VAC
4	Output Waveform ( Backup Mode)	Pure Sinewave
5	Output Frequency (Backup Mode)	50Hz ± 0.5Hz (In Normal / UPS Mode)
6	Normal Mode Mains Input Range in system ON Mode	90V To 290V ± 10V
7	UPS Mode Mains Input Range in System ON Mode	180V To 260V ± 6V
8	EQP Mode Mains Input Range in System ON Mode	140V - 260VAC ± 10V
9	Output Voltage (ON Mains Mode)	Same as Input Voltage
10	Normal Mode Transfer Time in System ON Mode	<30 mS
11	UPS Mode Transfer Time in System ON Mode	≤10 mS
12	Nominal Voltage, Recommended Battery	24V, 12V / 80Ah - 230Ah, 2Nos Lead-Acid Batteries
13	Charging Current in Normal Charging Mode	10A ± 1.5A DC (By Back Side Selection Switch)
14	Charging Current in High Charging Mode	15A ± 1.5A DC (By Back Side Selection Switch)
15	Protections in Backup & Mains Mode	Over Load, Short Circuit, Input, Battery Low Voltage, Mains Voltage Low/high, Mains Input Frequency Low/high Cut Off, Mains RCB Trip, Heat Sink Over Temperature, Battery Over Charging
16	Short Circuit Protection	Provided with one retry
17	Generator Compatibility	Provided
18	Warranty	2 Years
19	Solar PV Voltage	35 VOC to 42 VOC
20	Solar PV Maximum Current	40 A ± 2 A
21	Solar PV Maximum Wattage	1280Wp
22	Applications	Fan, CFL, Tube Light, EESL LED Bulb, LED TV (up to 65"), Inverter Refrigerator (up to 600 L), Mixer (up to 1000W), Room Cooler / Desert Cooler (up to 90L / 300W), Sound Bar / Speaker System, 1 HP Monoblock Self Prime Pump, Kitchen Chimney (up to 1200m³/hr), Desktop Computer, DeskJet Printer, Playstation.

## Synergy Smart 2750



### Speciality

- Monitoring and control of Solar Hybrid UPS via Wi-Fi & Bluetooth.
- Solar parameters display like Today's Saving, Yesterday's Saving and Total Saving.
- Facility to increase your fan speed by using mobile phone App.
- Additional equipment mode for critical equipment.
- Facility to increase UPS battery backup time by using mobile phone App.
- Facility to monitor UPS backup time using mobile phone App.
- Facility to monitor load usage using App.
- Facility to save power by configuring Holiday Mode using App while going outstation.
- Digital Signal Controller based design for Pure Sinewave output.
- Equipped with inbuilt high efficiency solar charge controller with solar panel compatibility as per specification.
- Selectable charging mode for different battery technologies (Flat, Tubular & Local Battery) and capacities (80 to 250Ah).
- Battery Gravity Builder with overcharge and deep discharge protections.
- Intelligent load and temperature based cooling fan operation.
- User configurable solar settings.
- User configurable UPS settings.

SL. No.	Specification	Values
1	Power Rating (VA / W)	2200VA / 1750W
2	Nominal Output Voltage at No Load in Normal Mode, 24V DC (Before Solar Connected)	240 ± 5V, 50Hz, 1P
3	Nominal Output Voltage at No Load in Power Saver Max Mode, 24V DC (Before Solar Connected)	220 ± 5V, 50Hz, 1P
4	Nominal Output Voltage at No Load in UPS Mode, 24V D	230 ± 5V, 50Hz, 1P
5	Nominal Output Voltage at No Load in Equipment Mode, 24V DC	230V ± 5VAC , Fast Changeover, Good Regulation
6	Nominal Output Voltage at No Load in High Performance Mode (Select through mobile APP.)	240V ± 5VAC
7	Output Waveform ( Backup Mode)	Pure Sinewave
8	Output Frequency (Backup Mode)	50Hz + 0.5Hz (In Normal / UPS Mode)
9	Normal Mode Mains Input Range in system ON Mode	90V - 290VAC ± 10V, 40Hz - 57Hz
10	UPS Mode Mains Input Range in System ON Mode	180V - 260VAC ± 6V, 46Hz - 54Hz
11	EQP Mode Mains Input Range in System ON Mode	140V - 260VAC ± 10V, 46Hz - 54Hz
12	Output Voltage (ON Mains Mode)	Same as Input Voltage
13	UPS Mode Transfer Time in System ON Mode	≤10 mS
14	Nominal Voltage, Recommended Battery	24V, 80Ah to 230Ah , lead Acid 2 Nos
15	Charging Current in Normal Charging Mode	12A + 1.5A DC (By Back Side Selection Switch)
16	Charging Current in High Charging Mode	18A + 2A DC (By Back Side Selection Switch)
17	Protections in Backup & Mains Mode	Input Mains Voltage Low / High Cut Off, Input Mains Frequency Low / High Cut Off, Over Temperature, Battery Over Charging
18	Generator Compatibility	Provided
19	Warranty	24 Months
20	Solar PV Maximum Voltage	35 to 50 VOC
21	Solar PV Maximum Current	50 ± 3A
22	Solar PV Maximum Wattage	1620 W
23	Applications	Fan, CFL, Tube Light, EESL LED Bulb, TV, Iron box, Refrigerator, Cooler, Mixer Grinder, Desktop Computer, DeskJet Printer, Playstation, Pump set -0.5Hp, Geysers - 1kW, Inverter AC - 0.75 Ton, Automatic Washing Machine (up to 1200 W)

## Synergy Smart 3750



### Speciality

- Monitoring and control of Solar Hybrid UPS via Wi-Fi & Bluetooth.
- Solar parameters display like Today's Saving, Yesterday's Saving and Total Saving.
- Facility to increase your fan speed by using mobile phone App.
- Additional equipment mode for critical equipment.
- Facility to increase UPS battery backup time by using mobile phone App.
- Facility to monitor UPS backup time using mobile phone App.
- Facility to monitor load usage using App.
- Facility to save power by configuring Holiday Mode using App while going outstation.
- Digital Signal Controller based design for Pure Sinewave output.
- Equipped with inbuilt high efficiency solar charge controller with solar panel compatibility as per specification.
- Selectable charging mode for different battery technologies (Flat, Tubular & Local Battery) and capacities (80 to 250Ah).
- Battery Gravity Builder with overcharge and deep discharge protections.
- Intelligent load and temperature based cooling fan operation.
- User configurable solar settings.
- User configurable UPS settings.

SL. No.	Specification	Values
1	Power Rating (VA / W)	3200VA / 2550W
2	Nominal Output Voltage at No Load in Normal Mode, 36V DC (Before Solar Connected)	240 ± 5V, 50Hz, 1P
3	Nominal Output Voltage at No Load in Power Saver Max Mode, 36V DC (Before Solar Connected)	220 ± 5V, 50Hz, 1P
4	Nominal Output Voltage at No Load in UPS Mode, 36V D	230 ± 5V, 50Hz, 1P
5	Nominal Output Voltage at No Load in Equipment Mode, 36V DC	230V ± 5VAC , Fast Changeover, Good Regulation
6	Nominal Output Voltage at No Load in High Performance Mode (Select through mobile APP.)	240V ± 5VAC
7	Output Waveform ( Backup Mode)	Pure Sinewave
8	Output Frequency (Backup Mode)	50Hz + 0.5Hz (In Normal / UPS Mode)
9	Normal Mode Mains Input Range in system ON Mode	90V - 290VAC, 40Hz - 57Hz
10	UPS Mode Mains Input Range in System ON Mode	180V - 260VAC + 6V, 46Hz - 54Hz
11	EQP Mode Mains Input Range in System ON Mode	140V - 260VAC + 10V, 46Hz - 54Hz
12	Output Voltage (ON Mains Mode)	Same as Input Voltage
13	UPS Mode Transfer Time in System ON Mode	≤10 mS
14	Nominal Voltage, Recommended Battery	36V, 80Ah to 230Ah , lead Acid 3 Nos
15	Charging Current in Normal Charging Mode	12A + 1.5A DC (By Back Side Selection Switch)
16	Charging Current in High Charging Mode	18A + 2A DC (By Back Side Selection Switch)
17	Protections in Backup & Mains Mode	Input Mains Voltage Low / High Cut Off, Input Mains Frequency Low / High Cut Off, Over Temperature, Battery Over Charging
18	Generator Compatibility	Provided
19	Warranty	24 Months
20	Solar PV Maximum Voltage	60 to 85 VOC
21	Solar PV Maximum Current	35 ± 2A
22	Solar PV Maximum Wattage	2160 W
23	Applications	Fan, CFL, Tube Light, EESL LED Bulb, TV, Iron Box, Refrigerator, Cooler, Mixer Grinder, Desktop Computer, DeskJet Printer, Playstation, Pump set -0.75Hp, Geyser - 1.5 kW, Dishwasher - 2kW, Induction Cooktop - 1.2kW, Inverter AC - 1.5 Ton, Automatic Washing Machine up to 1600Wt

## Synergy Smart 4750



### Speciality

- Monitoring and control of Solar Hybrid UPS via Wi-Fi & Bluetooth.
- Solar parameters display like Today's Saving, Yesterday's Saving and Total Saving.
- Facility to increase your fan speed by using mobile phone App.
- Additional equipment mode for critical equipment.
- Facility to increase UPS battery backup time by using mobile phone App.
- Facility to monitor UPS backup time using mobile phone App.
- Facility to monitor load usage using App.
- Facility to save power by configuring Holiday Mode using App while going outstation.
- Digital Signal Controller based design for Pure Sinewave output.
- Equipped with inbuilt high efficiency solar charge controller with solar panel compatibility as per specification.
- Selectable charging mode for different battery technologies (Flat, Tubular & Local Battery) and capacities (80 to 250Ah).
- Battery Gravity Builder with overcharge and deep discharge protections.
- Intelligent load and temperature based cooling fan operation.
- User configurable solar settings.
- User configurable UPS settings.

SL. No.	Specification	Values
1	Power Rating (VA / W)	4200VA / 3350W
2	Nominal Output Voltage at No Load in Normal Mode, 48V DC (Before Solar Connected)	240 ± 5V, 50Hz, 1P
3	Nominal Output Voltage at No Load in Power Saver Max Mode, 48V DC (Before Solar Connected)	220 ± 5V, 50Hz, 1P
4	Nominal Output Voltage at No Load in UPS Mode, 48V DC	220 ± 5V, 50Hz, 1P
5	Nominal Output Voltage at No Load in Equipment Mode, 48V DC	230V ± 5VAC , Fast Changeover, Good Regulation
6	Nominal Output Voltage at No Load in High Performance Mode (Select through mobile APP.)	240V ± 5VAC
7	Output Waveform ( Backup Mode)	Pure Sinewave
8	Output Frequency (Backup Mode)	50Hz + 0.5Hz (In Normal / UPS Mode)
9	Normal Mode Mains Input Range in system ON Mode	90V - 290VAC, 40Hz - 57Hz
10	UPS Mode Mains Input Range in System ON Mode	180V - 260VAC + 6V, 46Hz - 54Hz
11	EQP Mode Mains Input Range in System ON Mode	140V - 260VAC + 10V, 46Hz - 54Hz
12	Output Voltage (ON Mains Mode)	Same as Input Voltage
13	UPS Mode Transfer Time in System ON Mode	≤10 mS
14	Nominal Voltage, Recommended Battery	48V, 80Ah to 230Ah , lead Acid 4 Nos
15	Charging Current in Normal Charging Mode	12A + 1.5A DC (By Back Side Selection Switch)
16	Charging Current in High Charging Mode	18A + 2A DC (By Back Side Selection Switch)
17	Protections in Backup & Mains Mode	Input Mains Voltage Low / High Cut Off, Input Mains Frequency Low / High Cut Off, Over Temperature, Battery Over Charging
18	Generator Compatibility	Provided
19	Warranty	24 Months
20	Solar PV Maximum Voltage	70 to 100 VOC
21	Solar PV Maximum Current	50 ± 2A
22	Solar PV Maximum Wattage	3300 W
23	Applications	Fan, CFL, Tube Light, EESL LED Bulb, TV, Iron Box, Refrigerator, Cooler, Mixer Grinder, Desktop Computer, DeskJet Printer, Playstation, Pump set - 1Hp, Geyser - 2 kW, Dishwasher - 2kW, Induction Cooktop - 1.5kW, Inverter AC - 1.5 Ton, Automatic Washing Machine (up to 2500 W)



## Smart Series



AN INVERTER WITH MANY SMART FEATURES V-GUARD

## Smart 1100



### Speciality

- Smart mobile phone App.
- Run high-intensity appliances.
- Supercharge to save time.
- Turn on /off from your phone.
- Control performance levels.
- Override mains during voltage dips.
- Good quality output power.
- Select Normal / UPS Modes easily.
- Selectable charging modes for different battery technology (Flat / Tubular Battery) and capacities (80 to 230 Ah).
- Battery Gravity Builder with overcharge and deep discharge protection.

SL. No.	Specification	Values
1	Power Rating (VA / W)	900VA / 740W
2	Nominal Output Voltage at No Load in Normal Mode	220V ± 5VAC
3	Nominal Output Voltage at No Load in UPS Mode	230V ± 5VAC
4	Output Waveform ( Backup Mode)	Pure Sinewave
5	Output Frequency (Backup Mode)	50Hz ± 0.5Hz (In Normal / UPS Mode)
6	Normal Mode Mains Input Range in system ON Mode	90V To 290V ± 10V
7	UPS Mode Mains Input Range in System ON Mode	180V To 260V ± 6V
8	Output Voltage (ON Mains Mode)	Same as Input Voltage
9	Normal Mode Transfer Time in System ON Mode	<30 mS
10	UPS Mode Transfer Time in System ON Mode	≤10 mS
11	Nominal Voltage, Recommended Battery	12V, 12V / 80Ah - 230Ah, 1No Lead-Acid Battery
12	Charging Current in Normal Charging Mode	10A ± 1.5A DC (By Back Side Selection Switch)
13	Charging Current in High Charging Mode	15A ± 1.5A DC (By Back Side Selection Switch)
14	Protections in Backup & Mains Mode	Over Load, Short Circuit, Input, Battery Low Voltage, Mains Voltage Low/high, Mains Input Frequency Low/high Cut Off, Mains RCB Trip, Heat Sink Over Temperature, Battery Over Charging
15	USB Charger Voltage	5.0V DC ± 0.2V DC, Emergency power to charge your mobile even after inverter fully off after low battery protection.
16	USB Charger Current Capacity	1A ± 0.2A
17	Short Circuit Protection	Provided with one retry
18	Generator Compatibility	Provided
19	Warranty	2 Years
20	Applications	Fan, CFL, Tube Light, EESL LED Bulb, Mixer (up to 600W**), Room Cooler (up to 200W**), LED TV (up to 49"), Inverter Refrigerator (up to 260L), Desktop Computer, Deskjet Printer, Playstation.



## Smart 1500



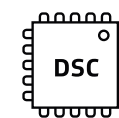
### Speciality

- Smart mobile phone App.
- Run high-intensity appliances.
- Supercharge to save time.
- Turn on /off from your phone.
- Control performance levels.
- Override mains during voltage dips.
- Good quality output power.
- Select Normal / UPS Modes easily.
- Selectable charging modes for different battery technology (Flat / Tubular Battery) and capacities (80 to 230 AH).
- Battery Gravity Builder with overcharge and deep discharge protection.

SL. No.	Specification	Values
1	Power Rating (VA / W)	1200VA / 840W
2	Nominal Output Voltage at No Load in Normal Mode	220V ± 5VAC
3	Nominal Output Voltage at No Load in UPS Mode	230V ± 5VAC
4	Output Waveform ( Backup Mode)	Pure Sinewave
5	Output Frequency (Backup Mode)	50Hz ± 0.5Hz (In Normal / UPS Mode)
6	Normal Mode Mains Input Range in system ON Mode	90V To 290V ± 10V
7	UPS Mode Mains Input Range in System ON Mode	180V To 260V ± 6V
8	Output Voltage (ON Mains Mode)	Same as Input Voltage
9	Normal Mode Transfer Time in System ON Mode	<30 mS
10	UPS Mode Transfer Time in System ON Mode	≤10 mS
11	Nominal Voltage, Recommended Battery	12V, 12V / 80Ah - 230Ah, 1No Lead-Acid Battery
12	Charging Current in Normal Charging Mode	12A ± 1.5A DC (By Back Side Selection Switch)
13	Charging Current in High Charging Mode	17A ± 1.5A DC (By Back Side Selection Switch)
14	Protections in Backup & Mains Mode	Over Load, Short Circuit, Input, Battery Low Voltage, Mains Voltage Low/high, Mains Input Frequency Low/high Cut Off, Mains RCB Trip, Heat Sink Over Temperature, Battery Over Charging
15	USB Charger Voltage	5.0V DC ± 0.2V DC, Emergency power to charge your mobile even after inverter fully off after low battery protection.
16	USB Charger Current Capacity	1A ± 0.2A
17	Short Circuit Protection	Provided with one retry
18	Generator Compatibility	Provided
19	Warranty	2 Years
20	Applications	Fan, CFL, Tube Light, EESL LED Bulb, Mixer (up to 900W**), Room Cooler (up to 250W**), LED TV (up to 55"), Inverter Refrigerator (up to 300L), Desktop Computer, Deskjet Printer, Playstation.



## Prime Series



32 Bit DSC Based Design



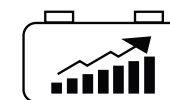
High Inrush Load Handling



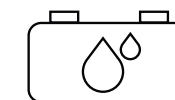
Runs Room Cooler



Runs monoblock pump



Battery Gravity Builder



Battery Water Topping Reminder



Normal/High Output Voltage Modes



## Prime 850



### Speciality

- High inrush load handling.
- Normal/high voltage modes for different output voltage performances.
- Digital Signal Controller based design for Pure Sinewave output.
- Battery Gravity Builder with overcharge and deep discharge protections.
- Selectable charging mode for different battery technologies. (Flat / Tubular Battery) and capacities (80 to 230 Ah) using selector switch.
- Intelligent Fuzzy Logic Battery water topping reminder for water topping to avoid battery failures.
- 10-15% higher back up than any other competitor brands.

SL. No.	Specification	Values
1	Power Rating (VA / W)	750VA / 600W
2	Nominal Output Voltage at No Load in Normal Mode	220V ± 5VAC
3	Nominal Output Voltage at No Load in UPS Mode	230V ± 5VAC
4	Output Waveform ( Backup Mode)	Pure Sinewave
5	Output Frequency (Backup Mode)	50Hz ± 0.5Hz (In Normal / UPS Mode)
6	Normal Mode Mains Input Range in system ON Mode	90V To 290V ± 10V
7	UPS Mode Mains Input Range in System ON Mode	180V To 260V ± 6V
8	Output Voltage (ON Mains Mode)	Same as Input Voltage
9	Normal Mode Transfer Time in System ON Mode	<20 mS
10	UPS Mode Transfer Time in System ON Mode	≤10 mS
11	Nominal Voltage, Recommended Battery	12V, 12V / 80Ah - 230Ah, 1No Lead-Acid Battery
12	Charging Current in Normal Charging Mode	10A ± 1.5A DC (By Back Side Selection Switch)
13	Charging Current in High Charging Mode	15A ± 1.5A DC (By Back Side Selection Switch)
14	Protections in Backup & Mains Mode	Over Load, Short Circuit, Input, Battery Low Voltage, Mains Voltage Low/high, Mains Input Frequency Low/high Cut Off, Mains RCB Trip, Heat Sink Over Temperature, Battery Over Charging
15	Short Circuit Protection	Provided with one retry
16	Generator Compatibility	Provided
17	Warranty	2 Years
18	Applications	Fan, CFL, Tube Light, EESL LED Bulb, Mixer (up to 450W**), Room Cooler (up to 180W**), LED TV (up to 43").

## Prime 1050



### Speciality

- High inrush load handling.
- Normal/high voltage modes for different output voltage performances.
- Digital Signal Controller based design for Pure Sinewave output.
- Battery Gravity Builder with overcharge and deep discharge protections.
- Selectable charging mode for different battery technologies (Flat / Tubular Battery) and capacities (80 to 230 Ah) using selector switch.
- Intelligent Fuzzy Logic Battery water topping reminder for water topping to avoid battery failures.
- 10-15% higher back up than any other competitor brands.

SL. No.	Specification	Values
1	Power Rating (VA/W)	900VA / 740W
2	Nominal Output Voltage at No Load in Normal Mode	220V ± 5VAC
3	Nominal Output Voltage at No Load in UPS Mode	230V ± 5VAC
4	Output Waveform ( Backup Mode)	Pure Sinewave
5	Output Frequency (Backup Mode)	50Hz ± 0.5Hz (In Normal / UPS Mode)
6	Normal Mode Mains Input Range in system ON Mode	90V To 290V ± 10V
7	UPS Mode Mains Input Range in System ON Mode	180V To 260V ± 6V
8	Output Voltage (ON Mains Mode)	Same as Input Voltage
9	Normal Mode Transfer Time in System ON Mode	<30 mS
10	UPS Mode Transfer Time in System ON Mode	≤10 mS
11	Nominal Voltage, Recommended Battery	12V, 12V / 80Ah - 230Ah, 1No Lead-Acid Battery
12	Charging Current in Normal Charging Mode	10A ± 1.5A DC (By Back Side Selection Switch)
13	Charging Current in High Charging Mode	15A ± 1.5A DC (By Back Side Selection Switch)
14	Protections in Backup & Mains Mode	Over Load, Short Circuit, Input, Battery Low Voltage, Mains Voltage Low/high, Mains Input Frequency Low/high Cut Off, Mains RCB Trip, Heat Sink Over Temperature, Battery Over Charging
15	Short Circuit Protection	Provided with one retry
16	Generator Compatibility	Provided
17	Warranty	2 Years
18	Applications	Fan, CFL, Tube Light, EESL LED Bulb, Mixer (up to 600W**), Room Cooler (up to 200W**), LED TV (up to 49"), Inverter Refrigerator (up to 260L), Desktop Computer, Deskjet Printer.

## Prime 1450



### Speciality

- High inrush load handling.
- Normal/high voltage modes for different output voltage performances.
- Digital Signal Controller based design for Pure Sinewave output.
- Battery Gravity Builder with overcharge and deep discharge protections.
- Selectable charging mode for different battery technologies (Flat / Tubular Battery) and capacities (80 to 230 Ah) using selector switch.
- Intelligent Fuzzy Logic Battery water topping reminder for water topping to avoid battery failures.
- 10-15% higher back up than any other competitor brands.

SL. No.	Specification	Values
1	Power Rating (VA/W)	1200VA / 840W
2	Nominal Output Voltage at No Load in Normal Mode	220V ± 5VAC
3	Nominal Output Voltage at No Load in UPS Mode	230V ± 5VAC
4	Output Waveform ( Backup Mode)	Pure Sinewave
5	Output Frequency (Backup Mode)	50Hz ± 0.5Hz (In Normal / UPS Mode)
6	Normal Mode Mains Input Range in system ON Mode	90V To 290V ± 10V
7	UPS Mode Mains Input Range in System ON Mode	180V To 260V ± 6V
8	Output Voltage (ON Mains Mode)	Same as Input Voltage
9	Normal Mode Transfer Time in System ON Mode	<30 mS
10	UPS Mode Transfer Time in System ON Mode	≤10 mS
11	Nominal Voltage, Recommended Battery	12V, 12V / 80Ah - 230Ah, 1No Lead-Acid Battery
12	Charging Current in Normal Charging Mode	12A ± 1.5A DC (By Back Side Selection Switch)
13	Charging Current in High Charging Mode	17A ± 1.5A DC (By Back Side Selection Switch)
14	Protections in Backup & Mains Mode	Over Load, Short Circuit, Input, Battery Low Voltage, Mains Voltage Low/high, Mains Input Frequency Low/high Cut Off, Mains RCB Trip, Heat Sink Over Temperature, Battery Over Charging
15	Short Circuit Protection	Provided with one retry
16	Generator Compatibility	Provided
17	Warranty	2 Years
18	Applications	Fan, CFL, Tube Light, EESL LED Bulb, Mixer (up to 900W**), Room Cooler (up to 250W**), LED TV (up to 55"), Inverter Refrigerator (up to 300L), Desktop Computer, Deskjet Printer.

## Prime 1750



### Speciality

- Battery Gravity Builder with overcharge and deep discharge protections.
- Selectable charging mode for different battery technologies (Tubular Battery / Flat Plate Battery / Local Battery) and capacities (80 to 230 Ah) using selector switch.
- Fuzzy Logic based sensorless battery water topping reminder for water topping to avoid battery failures.
- Digital Signal Controller based design for Pure Sinewave.
- Selection switch to increase output voltage of UPS in backup mode and increase fan speed.

SL. No.	Specification	Values
1	Power Rating (VA / W)	1500VA / 1260W
2	Nominal Output Voltage at No Load in Normal Mode	220V ± 5VAC
3	Nominal Output Voltage at No Load in UPS Mode	230V ± 5VAC
4	Output Waveform ( Backup Mode)	Pure Sinewave
5	Output Frequency (Backup Mode)	50Hz ± 0.5Hz (In Normal / UPS Mode)
6	Normal Mode Mains Input Range in system ON Mode	90V To 290V ± 10V
7	UPS Mode Mains Input Range in System ON Mode	180V To 260V ± 6V
8	Output Voltage (ON Mains Mode)	Same as Input Voltage
9	Normal Mode Transfer Time in System ON Mode	<20 mS
10	UPS Mode Transfer Time in System ON Mode	≤10 mS
11	Nominal Voltage, Recommended Battery	24V, 12V / 80Ah - 230Ah, 2Nos Lead-Acid Batteries
12	Charging Current in Normal Charging Mode	10A ± 1.5A DC (By Back Side Selection Switch)
13	Charging Current in High Charging Mode	15A ± 1.5A DC (By Back Side Selection Switch)
14	Protections in Backup & Mains Mode	Over Load, Short Circuit, Input, Battery Low Voltage, Mains Voltage Low/high, Mains Input Frequency Low/high Cut Off, Mains RCB Trip, Heat Sink Over Temperature, Battery Over Charging
15	Short Circuit Protection	Provided with one retry
16	Generator Compatibility	Provided
17	Warranty	2 Years
18	Applications	LED TV (up to 65"), Fan, EESL LED Bulb, CFL, Tube Light, Inverter Refrigerator (up to 600 Litres), Mixer (up to 1000W**), Room cooler / Desert Cooler (up to 90L / 300W), Sound bar / Speaker system, 1HP Monoblock Self Prime Pump, Kitchen Chimney (up to 1200 m³/hr), Desktop Computer, Deskjet Printer, Playstation.



## Prime 2250



### Speciality

- Facility to increase your fan speed by using switch on product.
- Digital Signal Controller based design for Pure Sinewave output.
- Selectable charging mode for different battery technologies (Flat/Tubular / Local battery) and capacities (80 to 230Ah).
- Battery Gravity Builder with overcharge and deep discharge protections.
- Fuzzy logic based sensor less battery water topping reminder.
- Long battery backup.

SL. No.	Specification	Values
1	Power Rating (VA / W)	2000VA / 1640W
2	Nominal Output Voltage at No Load in Normal Mode	220V ± 5VAC, 50Hz, 1P
3	Nominal Output Voltage at No Load in UPS Mode	230V ± 5VAC, 50Hz, 1P
4	Nominal Output Voltage at No Load in High Performance mode	240V ± 5VAC, 50Hz, 1P
5	Output Waveform ( Backup Mode)	Pure Sinewave
6	Output Frequency (Backup Mode)	50Hz + 0.5Hz (In Normal / UPS Mode)
7	Normal Mode Mains Input Range in system ON Mode	90V - 290VAC ± 10V, 40Hz - 57Hz
8	UPS Mode Mains Input Range in System ON Mode	180V - 260VAC ± 6V, 46Hz - 54Hz
9	Output Voltage (ON Mains Mode)	Same as Input Voltage
10	Normal Mode Transfer Time in System ON Mode	<20 mS
11	UPS Mode Transfer Time in System ON Mode	≤10 mS
12	Nominal Voltage, Recommended Battery	24V, 80Ah to 230Ah, Lead Acid (2No.)
13	Charging Current in Normal Charging Mode	10A + 1.5A DC (By Back Side Selection Switch)
14	Charging Current in High Charging Mode	15A + 1.5A DC (By Back Side Selection Switch)
15	Protections in Backup & Mains Mode	Overload, Output Short Circuit, Battery Low / High, Over Temperature, Feedback Open
16	Generator Compatibility	Provided
17	Warranty	24 Months
17	Applications	Fan, CFL, Tube Light, EESL LED Bulb, LED TV (up to 65"), Mixer (up to 1200W**), Room Cooler / Desert Cooler (up to 90Litre / 300W), Geyser (up to 1kW), Inverter AC (up to 1Ton), Inverter Refrigerator (up to 600 Litres), Sound bar / Speaker System, 1Hp Monoblock Self Prime Pump, Kitchen Chimney (up to 1200m³/hr), Desktop Computer, DeskJet Printer, Playstation



## Nextgen Series



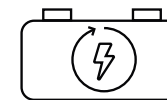
Runs Mixer  
Grider



Runs  
Room Cooler



Solar + Grid Charging,  
with solar priority



Super Charger Charges  
Battery even at 90V mains



Battery Water  
Topping Reminder



Battery Gravity  
Builder

V-GUARD

## Nextgen 850



### Speciality

- Charges Battery from as low as 90V mains.
- True Solar UPS with In built Solar Charger suitable for 500Wp solar panels.
- Runs Juicer / Mixer/ Grinder Easily up to 450W rating.
- Good quality output power.
- Select Normal / UPS Modes easily.
- Intelligent Artificial Intelligence based battery water topping reminder.
- Battery Type Selection switch for Tubular Battery / Flat Plate Battery / Local Battery.
- Two type charging current; Power Saver Max and Normal mode to utilize panel power effectively.

SL. No.	Specification	Values
1	Power Rating (VA/W)	750VA / 600W
2	Nominal Output Voltage at No Load in Normal Mode	245V ± 8VAC
3	Nominal Output Voltage at No Load in UPS Mode	230V ± 8VAC
4	Output Waveform ( Backup Mode)	Pseudo Sinewave
5	Output Frequency (Backup Mode)	50Hz ± 0.5Hz (In Normal / UPS Mode)
6	Normal Mode Mains Input Range in system ON Mode	80V To 290V ± 10V
7	UPS Mode Mains Input Range in System ON Mode	180V To 260V ± 6V
8	Output Voltage (ON Mains Mode)	Same as Input Voltage
9	Normal Mode Transfer Time in System ON Mode	<20 mS
10	UPS Mode Transfer Time in System ON Mode	≤10 mS
11	Nominal Voltage, Recommended Battery	12V, 12V / 80Ah - 230Ah, 1No Lead-Acid Battery
12	Charging Current in Normal Charging Mode	10A ± 1.5A DC (By Back Side Selection Switch)
13	Charging Current in High Charging Mode	13A ± 1.5A DC (By Back Side Selection Switch)
14	Protections in Backup & Mains Mode	Over Load, Short Circuit, Input, Battery Low Voltage, Mains Voltage Low/high, Mains Input Frequency Low/high Cut Off, Mains RCB Trip, Heat Sink Over Temperature, Battery Over Charging
15	USB Charger Voltage	5.0V DC ± 0.2V DC, Emergency power to charge your mobile even after inverter fully off after low battery protection.
16	USB Charger Current Capacity	1A DC ± 0.2A DC
17	Short Circuit Protection	Provided with one retry
18	Generator Compatibility	Provided
19	Warranty	2 Years
20	Solar PV Maximum Voltage	25 VOC
21	Solar PV Maximum Current	20 A ± 2 A
22	Solar PV Maximum Wattage	500 Wp
23	Applications	Fan, CFL, Tube Light, EESL LED Bulbs, Mixer (up to 450W), Room Cooler (up to 180W) LED TV (up to 43").

## Nextgen 1100



### Speciality

- Charges Battery from as low as 90V mains.
- True Solar UPS with In built Solar Charger suitable for 500Wp solar panels.
- Runs Juicer / Mixer/ Grinder Easily up to 600W rating.
- Good quality output power.
- Select Normal / UPS Modes easily.
- Intelligent Artificial Intelligence based battery water topping reminder.
- Battery Type Selection Switch for Tubular Battery / Flat Plate Battery / Local Battery.
- Two type charging current; Power Saver Max and Normal mode to utilize panel power effectively.

SL. No.	Specification	Values
1	Power Rating (VA / W)	900VA / 720W
2	Nominal Output Voltage at No Load in Normal Mode	245V ± 8VAC
3	Nominal Output Voltage at No Load in UPS Mode	230V ± 8VAC
4	Output Waveform ( Backup Mode)	Pseudo Sinewave
5	Output Frequency (Backup Mode)	50Hz ± 0.5Hz (In Normal / UPS Mode)
6	Normal Mode Mains Input Range in system ON Mode	80V To 290V ± 10V
7	UPS Mode Mains Input Range in System ON Mode	180V To 260V ± 6V
8	Output Voltage (ON Mains Mode)	Same as Input Voltage
9	Normal Mode Transfer Time in System ON Mode	<20 mS
10	UPS Mode Transfer Time in System ON Mode	≤10 mS
11	Nominal Voltage, Recommended Battery	12V, 12V / 80Ah - 230Ah, 1No Lead-Acid Battery
12	Charging Current in Normal Charging Mode	10A ± 1.5A DC (By Back Side Selection Switch)
13	Charging Current in High Charging Mode	15A ± 1.5A DC (By Back Side Selection Switch)
14	Protections in Backup & Mains Mode	Over Load, Short Circuit, Input, Battery Low Voltage, Mains Voltage Low/high, Mains Input Frequency Low/high Cut Off, Mains RCB Trip, Heat Sink Over Temperature, Battery Over Charging
15	USB Charger Voltage	5.0V DC ± 0.2V DC, Emergency power to charge your mobile even after inverter fully off after low battery protection.
16	USB Charger Current Capacity	1A ± 0.2A
17	Short Circuit Protection	Provided with one retry
18	Generator Compatibility	Provided
19	Warranty	2 Years
20	Solar PV Maximum Voltage	25 VOC
21	Solar PV Maximum Current	20 A ± 2 A
22	Solar PV Maximum Wattage	550 Wp
23	Applications	Fan, CFL, Tube Light, EESL LED Bulbs, Mixer (up to 600W), Room Cooler (up to 250W) LED TV (up to 49").



## Nextgen 1250



### Speciality

- Charges Battery from as low as 90V mains.
- True Solar UPS with In built Solar Charger suitable for 600Wp solar panels.
- Runs Juicer / Mixer/ Grinder Easily up to 900W rating.
- Good quality output power.
- Select Normal / UPS Modes easily.
- Intelligent Artificial Intelligence based battery water topping reminder.
- Battery Type Selection switch for Tubular Battery / Flat Plate Battery / Local Battery.
- Two type charging current; Power Saver Max and Normal mode to utilize panel power effectively.

SL. No.	Specification	Values
1	Power Rating (VA / W)	1100VA / 880W
2	Nominal Output Voltage at No Load in Normal Mode	245V ± 8VAC
3	Nominal Output Voltage at No Load in UPS Mode	230V ± 8VAC
4	Output Waveform ( Backup Mode)	Pseudo Sinewave
5	Output Frequency (Backup Mode)	50Hz ± 0.5Hz (In Normal / UPS Mode)
6	Normal Mode Mains Input Range in system ON Mode	80V To 290V ± 10V
7	UPS Mode Mains Input Range in System ON Mode	180V To 260V ± 6V
8	Output Voltage (ON Mains Mode)	Same as Input Voltage
9	Normal Mode Transfer Time in System ON Mode	<20 mS
10	UPS Mode Transfer Time in System ON Mode	≤10 mS
11	Nominal Voltage, Recommended Battery	12V, 12V / 80Ah - 230Ah, 1No Lead-Acid Battery
12	Charging Current in Normal Charging Mode	10A ± 1.5A DC (By Back Side Selection Switch)
13	Charging Current in High Charging Mode	15A ± 1.5A DC (By Back Side Selection Switch)
14	Protections in Backup & Mains Mode	Over Load, Short Circuit, Input, Battery Low Voltage, Mains Voltage Low/high, Mains Input Frequency Low/high Cut Off, Mains RCB Trip, Heat Sink Over Temperature, Battery Over Charging
15	USB Charger Voltage	5.0V DC ± 0.2V DC, Emergency power to charge your mobile even after inverter fully off after low battery protection.
16	USB Charger Current Capacity	1A ± 0.2A
17	Short Circuit Protection	Provided with one retry
18	Generator Compatibility	Provided
19	Warranty	2 Years
20	Solar PV Maximum Voltage	25 VOC
21	Solar PV Maximum Current	20 A ± 2 A
22	Solar PV Maximum Wattage	640 Wp
23	Applications	Fan, CFL, Tube Light, EESL LED Bulbs, Mixer (up to 900W), Room Cooler (up to 250W) LED TV (up to 55").



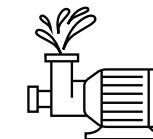
## Jaadoo Series



Runs Mixer  
Grinder



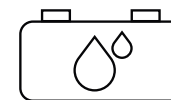
Runs  
Room Cooler



Runs monoblock  
pump



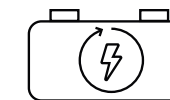
Intelligent deep  
discharge protection  
for battery



Battery Water  
Topping Reminder



Battery Gravity  
Builder



Super Charger Charges  
Battery even at 90V mains



## Jaadoo 60



### Speciality

- Portable and sleek product.
- Solar compatible.
- Charging through solar panels up to 20W or through mains.
- Micro controller based high frequency design.
- Long beam torch light.
- Full functional UPS - change over from mains to battery mode.
- Intelligent deep discharge protection for battery.

SL. No.	Specification	Values
1	Power Rating (W)	45W
2	Max. Battery Charging Voltage (Mains)	13.8VDC $\pm$ 0.2VDC
3	Max. Battery Charging Voltage (Solar)	14VDC $\pm$ 0.2VDC
4	Output Waveform	DC
5	Output Voltage (Backup Mode)	140-230 VDC
6	Output Voltage (Line Mode)	110-280 $\pm$ 10VAC
7	Input Frequency	50 Hz $\pm$ 3 Hz
8	UPS Efficiency	>85%
9	Short Circuit Protection	Provided
10	Battery Reverse Protection	Provided
11	Panel Capacity	20W (Max.)
12	Warranty	12 Months
13	Applications	EESL LED Bulbs (4 X 9W), Mobile Charger(5V / 1.5A) / CFL (3 X 15 W)

## Jaadoo 400



### Speciality

- Capable to run all types of load like room coolers, mixer grinders and LED Bulbs within capacity.
- Digital Signal Controller based design with Pseudo Sinewave output.
- Selectable battery mode for different battery technologies (Tubular / Flat / Local Batteries) and capacities.
- Battery Gravity Builder with overcharge and deep discharge protections.
- Fuzzy Logic based sensor less battery water topping reminder.
- Controlled output voltage in UPS mode.

SL. No.	Specification	Values
1	Power Rating (VA / W)	350VA / 250W
2	Nominal Output Voltage at No Load in Normal Mode	240 + 8V, 50Hz, 1P
3	Nominal Output Voltage at No Load in UPS Mode	230 + 8V, 50Hz, 1P
4	Output Waveform ( Backup Mode)	Pseudo Sinewave
5	Output Frequency (Backup Mode)	50Hz + 0.5Hz (In Normal / UPS Mode)
6	Normal Mode Mains Input Range in system ON Mode	80V - 290VAC $\pm$ 10V, 43Hz - 57Hz
7	UPS Mode Mains Input Range in System ON Mode	180V - 260VAC $\pm$ 6V, 47Hz - 53Hz
8	Output Voltage (ON Mains Mode)	Same as Input Voltage
9	Normal Mode Transfer Time in System ON Mode	<20 mS
10	UPS Mode Transfer Time in System ON Mode	$\leq$ 10 mS
11	Nominal Voltage, Recommended Battery	12V, 65Ah to 100Ah, Lead Acid (1No.)
12	Charging Current in Normal Charging Mode	8A + 1A DC
13	Protections in Backup & Mains Mode	Input Mains Voltage Low / High Cut Off, Input Mains Frequency Low / High Cut Off, Over Temperature, Battery Over Charging
14	Generator Compatibility	Provided
15	Warranty	12 Months
16	Applications	Fan, CFL, Tube Light, EESL LED Bulb, Personal Cooler (120W)**, LED TV (up to 32")**

## Jaadoo 700



### Speciality

- Capable to run all types of load like room coolers, Mixer Grinders and LED Bulbs within capacity.
- Digital Signal Controller based design with Pseudo Sinewave output.
- Selectable battery mode for different battery technologies (Tubular / Flat / Local batteries) and capacities.
- Battery Gravity Builder with overcharge and deep discharge protections.
- Fuzzy Logic based sensor less battery water topping reminder.
- Controlled output voltage in UPS mode.

SL. No.	Specification	Values
1	Power Rating (VA / W)	600VA / 500W
2	Nominal Output Voltage at No Load in Normal Mode	240 ± 8V, 50Hz, 1P
3	Nominal Output Voltage at No Load in UPS Mode	230 ± 8V, 50Hz, 1P
4	Output Waveform ( Backup Mode)	Pseudo Sinewave
5	Output Frequency (Backup Mode)	50Hz ± 0.5Hz (In Normal / UPS Mode)
6	Normal Mode Mains Input Range in system ON Mode	80V - 290VAC ± 10V, 43Hz - 57Hz
7	UPS Mode Mains Input Range in System ON Mode	180V - 260VAC ± 6V, 47Hz - 53Hz
8	Output Voltage (ON Mains Mode)	Same as Input Voltage
9	Normal Mode Transfer Time in System ON Mode	<20 mS
10	UPS Mode Transfer Time in System ON Mode	≤10 mS
11	Nominal Voltage, Recommended Battery	12V, 65Ah to 135Ah, Lead Acid (1No.)
12	Charging Current in Normal Charging Mode	12A ± 1.5A
13	Protections in Backup & Mains Mode	Input Mains Voltage Low / High Cut Off, Input Mains Frequency Low / High Cut Off, Over Temperature, Battery Over Charging
14	Generator Compatibility	Provided
15	Warranty	24 Months
16	Applications	FAN, CFL, Tube Light, EESL LED Bulb, Mixer(450W)**, Room Cooler (180W)**, LED TV (up to 32")**

## Jaadoo 800



### Speciality

- Suitable for low voltage areas.
- Keeps battery healthy & provides backup.
- Runs juicer/ Mixer Grinder easily up to 600W rating.
- At least 8-10% higher backup than competitors during backup modes.
- Intelligent Artificial Intelligence based battery water topping reminder avoids battery damage & reduced life due to water drying up.
- Charges battery from as low as 90 V mains.
- Battery Gravity Builder with overcharge and deep discharge protections.
- Better fan speed than competitor products on 1-2 fan loads.
- Selectable charging mode for different battery technologies (Tubular Battery / Flat Plate Battery / Local Battery) and capacities (80 to 230 Ah).
- Digital Signal Controller based design with Pseudo Sinewave output.
- Controlled output in UPS mode.

SL. No.	Specification	Values
1	Power Rating (VA / W)	750VA / 600W
2	Nominal Output Voltage at No Load in Normal Mode	245V ± 8VAC
3	Nominal Output Voltage at No Load in UPS Mode	230V ± 8VAC
4	Output Waveform ( Backup Mode)	Pseudo Sinewave
5	Output Frequency (Backup Mode)	50Hz ± 0.5Hz (In Normal / UPS Mode)
6	Normal Mode Mains Input Range in system ON Mode	80V To 290V ± 10V
7	UPS Mode Mains Input Range in System ON Mode	180V To 260V ± 6V
8	Output Voltage (ON Mains Mode)	Same as Input Voltage
9	Normal Mode Transfer Time in System ON Mode	<20 mS
10	UPS Mode Transfer Time in System ON Mode	≤10 mS
11	Nominal Voltage, Recommended Battery	12V, 12V / 80Ah - 230Ah, 1Nos Lead-Acid Battery
12	Charging Current in Normal Charging Mode	10A ± 1.5A DC (By Back Side Selection Switch)
13	Charging Current in High Charging Mode	13A ± 1.5A DC (By Back Side Selection Switch)
14	Protections in Backup & Mains Mode	Over Load, Short Circuit, Input, Battery Low Voltage, Mains Voltage Low/high, Mains Input Frequency Low/high Cut Off, Mains RCB Trip, Heat Sink Over Temperature, Battery Over Charging
15	Short Circuit Protection	Provided with one retry
16	Generator Compatibility	Provided
17	Warranty	2 Years
18	Applications	Fan,CFL, Tube Light, EESL LED Bulbs, Mixer (up to 600W), Room Cooler (up to 200W) LED TV (up to 40").

## Jaadoo 900



### Speciality

- Capable to run all types of load like room coolers, Mixer Grinders and LED Bulbs within capacity.
- Digital Signal Controller based design with Pseudo Sinewave output.
- Selectable charging mode for different battery technologies (Tubular / Flat / Local batteries) and capacities (80Ah to 230Ah).
- Battery Gravity Builder with overcharge and deep discharge protections.
- Fuzzy Logic based sensor less battery water topping reminder.
- Controlled output voltage in UPS mode.

SL. No.	Specification	Values
1	Power Rating (VA / W)	850VA / 680W
2	Nominal Output Voltage at No Load in Normal Mode	245 + 8V, 50Hz, 1P
3	Nominal Output Voltage at No Load in UPS Mode	230 + 8V, 50Hz, 1P
4	Output Waveform ( Backup Mode)	Pseudo Sinewave
5	Output Frequency (Backup Mode)	50Hz ± 0.5Hz (In Normal / UPS Mode)
6	Normal Mode Mains Input Range in system ON Mode	80V - 290VAC ± 10V, 43Hz - 57Hz
7	UPS Mode Mains Input Range in System ON Mode	180V - 260VAC ± 6V, 47Hz - 53Hz
8	Output Voltage (ON Mains Mode)	Same as Input Voltage
9	Normal Mode Transfer Time in System ON Mode	<20 mS
10	UPS Mode Transfer Time in System ON Mode	≤10 mS
11	Nominal Voltage, Recommended Battery	12V, 80Ah to 230Ah, Lead Acid (1No.)
12	Charging Current in Normal Charging Mode	10A + 1.5A DC (By Back Side Selection Switch)
13	Charging Current in High Charging Mode	13A + 1.5A DC (By Back Side Selection Switch)
14	Protections in Backup & Mains Mode	Input Mains Voltage Low / High Cut Off, Input Mains Frequency Low / High Cut Off, Over Temperature, Battery Over Charging
15	Generator Compatibility	Provided
16	Warranty	24 Months
17	Applications	Fan, CFL, Tube Light, EESL LED Bulbs, Mixer (up to 750W), Room Cooler (up to 225W) LED TV (up to 49")

## Jaadoo 1050



### Speciality

- Suitable for low voltage areas.
- Keeps battery healthy & provides backup.
- Runs juicer/ Mixer Grinder easily up to 760W rating.
- At least 8-10% higher backup than competitors during backup modes.
- Intelligent Artificial Intelligence based battery water topping reminder avoids battery damage & reduced life due to water drying up.
- Charges battery from as low as 90 V mains.
- Battery Gravity Builder with overcharge and deep discharge protections.
- Better fan speed than competitor products on 1-2 fan loads.
- Selectable charging mode for different battery technologies (Tubular Battery / Flat Plate Battery / Local Battery) and capacities (80 to 230 Ah).
- Digital Signal Controller based design with Pseudo Sinewave output.
- Controlled output in UPS mode.

SL. No.	Specification	Values
1	Power Rating (VA / W)	900VA / 760W
2	Nominal Output Voltage at No Load in Normal Mode	248V ± 8VAC
3	Nominal Output Voltage at No Load in UPS Mode	230V ± 8VAC
4	Output Waveform ( Backup Mode)	Pseudo Sinewave
5	Output Frequency (Backup Mode)	50Hz ± 0.5Hz (In Normal / UPS Mode)
6	Normal Mode Mains Input Range in system ON Mode	80V To 290V ± 10V
7	UPS Mode Mains Input Range in System ON Mode	180V To 260V ± 6V
8	Output Voltage (ON Mains Mode)	Same as Input Voltage
9	Normal Mode Transfer Time in System ON Mode	<20 mS
10	UPS Mode Transfer Time in System ON Mode	≤10 mS
11	Nominal Voltage, Recommended Battery	12V, 12V / 80Ah - 230Ah, 1Nos Lead-Acid Battery
12	Charging Current in Normal Charging Mode	10A ± 1.5A DC (By Back Side Selection Switch)
13	Charging Current in High Charging Mode	13A ± 1.5A DC (By Back Side Selection Switch)
14	Protections in Backup & Mains Mode	Over Load, Short Circuit, Input, Battery Low Voltage, Mains Voltage Low/high, Mains Input Frequency Low/high Cut Off, Mains RCB Trip, Heat Sink Over Temperature, Battery Over Charging
15	Short Circuit Protection	Provided with one retry
16	Generator Compatibility	Provided
17	Warranty	2 Years
18	Applications	Fan,CFL, Tube Light, EESL LED Bulbs, Mixer (up to 750W), Room Cooler (up to 250W) LED TV (up to 49").

## Jaadoo 1200



### Speciality

- Suitable for low voltage areas.
- Keeps battery healthy & provides backup.
- Runs juicer/ Mixer Grinder easily up to 900W rating.
- At least 8-10% higher backup than competitors during backup modes.
- Intelligent Artificial Intelligence based battery water topping reminder avoids battery damage & reduced life due to water drying up.
- Charges battery from as low as 90 V mains.
- Battery Gravity Builder with overcharge and deep discharge protections.
- Better fan speed than competitor products on 1-2 fan loads.
- Selectable charging mode for different battery technologies (Tubular Battery / Flat Plate Battery / Local Battery) and capacities (80 to 230 Ah).
- Digital Signal Controller based design with Pseudo Sinewave output.
- Controlled output in UPS mode.

SL. No.	Specification	Values
1	Power Rating (VA / W)	1100VA / 880W
2	Nominal Output Voltage at No Load in Normal Mode	248V ± 8VAC
3	Nominal Output Voltage at No Load in UPS Mode	230V ± 8VAC
4	Output Waveform ( Backup Mode)	Pseudo Sinewave
5	Output Frequency (Backup Mode)	50Hz ± 0.5Hz (In Normal / UPS Mode)
6	Normal Mode Mains Input Range in system ON Mode	80V To 290V ± 10V
7	UPS Mode Mains Input Range in System ON Mode	180V To 260V ± 6V
8	Output Voltage (ON Mains Mode)	Same as Input Voltage
9	Normal Mode Transfer Time in System ON Mode	<20 mS
10	UPS Mode Transfer Time in System ON Mode	≤10 mS
11	Nominal Voltage, Recommended Battery	12V, 12V / 80Ah - 230Ah, 1Nos Lead-Acid Battery
12	Charging Current in Normal Charging Mode	12A ± 1.5A DC (By Back Side Selection Switch)
13	Charging Current in High Charging Mode	17A ± 1.5A DC (By Back Side Selection Switch)
14	Protections in Backup & Mains Mode	Over Load, Short Circuit, Input, Battery Low Voltage, Mains Voltage Low/high, Mains Input Frequency Low/high Cut Off, Mains RCB Trip, Heat Sink Over Temperature, Battery Over Charging
15	Short Circuit Protection	Provided with one retry
16	Generator Compatibility	Provided
17	Warranty	2 Years
18	Applications	Fan, CFL, Tube Light, EESL LED Bulbs, Mixer (up to 900W), Room Cooler (up to 250W) LED TV (up to 55").

## Jaadoo 1650



### Speciality

- Suitable for low voltage areas.
- Keeps battery healthy & provides backup.
- Runs juicer/ Mixer Grinder easily up to 1000W rating.
- At least 8-10% higher backup than competitors during backup modes.
- Intelligent Artificial Intelligence based battery water topping reminder avoids battery damage & reduced life due to water drying up.
- Charges battery from as low as 95 V mains.
- Battery Gravity Builder with overcharge and deep discharge protections.
- Better fan speed than competitor products on 1-2 fan loads.
- Selectable charging mode for different battery technologies (Tubular Battery / Flat Plate Battery / Local Battery) and capacities (80 to 230 Ah).
- Digital Signal Controller based design with Pseudo Sinewave output.
- Controlled output in UPS mode.

SL. No.	Specification	Values
1	Power Rating (VA/W)	1500VA / 1260W
2	Nominal Output Voltage at No Load in Normal Mode	240V ± 8VAC
3	Nominal Output Voltage at No Load in UPS Mode	230V ± 8VAC
4	Output Waveform ( Backup Mode)	Pseudo Sinewave
5	Output Frequency (Backup Mode)	50Hz ± 0.5Hz (In Normal / UPS Mode)
6	Normal Mode Mains Input Range in system ON Mode	80V To 290V ± 10V
7	UPS Mode Mains Input Range in System ON Mode	180V To 260V ± 6V
8	Output Voltage (ON Mains Mode)	Same as Input Voltage
9	Normal Mode Transfer Time in System ON Mode	<20 mS
10	UPS Mode Transfer Time in System ON Mode	≤10 mS
11	Nominal Voltage, Recommended Battery	24V, 12V / 80Ah - 230Ah, 2Nos Lead-Acid Batteries
12	Charging Current in Normal Charging Mode	10A ± 1.5A DC (By Back Side Selection Switch)
13	Charging Current in High Charging Mode	15A ± 1.5A DC (By Back Side Selection Switch)
14	Protections in Backup & Mains Mode	Over Load, Short Circuit, Input, Battery Low Voltage, Mains Voltage Low/high, Mains Input Frequency Low/high Cut Off, Mains RCB Trip, Heat Sink Over Temperature, Battery Over Charging
15	Short Circuit Protection	Provided with one retry
16	Generator Compatibility	Provided
17	Warranty	2 Years
18	Applications	Fan, CFL, Tube Light, LED TV (up to 65"), EESL LED Bulb, Mixer (up to 950W), Desert Cooler (up to 90L / 300W), Inverter Refrigerator (up to 600L), Monoblock water Pump up to 1 HP, Kitchen Chimney (up to 1200m³/hr),



## Batteries

V-Guard very low maintenance battery which is designed for demanding home UPS applications has the distinctive advantage of requiring less topping up from the date of sale.

The spines & grids of the battery are casted with innovative alloy and its thick, modified plates ensure long life and greater reliability.

### Speciality

- Up to 40% extra backup.
- Long service life.
- Tubular positive plates for excellent corrosion resistance & long life.
- Heavy duty plates with excellent cycle life.
- Low rate of self discharge.
- Robust & aesthetically superior PPCP container.
- Stronger, sturdier & attractive packaging.
- Deep cycle design.



VJ 145

### Specification

Capacity	135Ah C20@27°C
Application	Digital UPS / UPS / etc.
Back-up time in hours with 400W bulb load	2 Hrs 20 Mins
Dimension of Battery	mm ± 5%
Length	505 mm
Width	220 mm
Height	285 mm
Weight of battery	Kg ± 5 %
Filled weight	42 Kg
Gross weight	43.5 Kg
Acid Volume (± 2 Ltrs)	16 Ltrs
Specific gravity of Electrolyte on Full Charge	1.245 ± 0.005 g/cc
Colour of carton	Multi Color
Spec of carton	535 mm x 235 mm x 335 mm (L x B x H)
Standard warranty	25 months
Pro-Rated warranty	15 months



VJ 160

### Specification

Capacity	150Ah C20@27°C
Application	Digital UPS / UPS / etc.
Back-up time in hours with 400W bulb load	2 Hrs 45 Mins
Dimension of Battery	mm ± 5%
Length	505mm
Width	220mm
Height	285mm
Weight of battery	Kg ± 5%
Filled weight	43.5Kg
Gross weight	45Kg
Acid Volume (± 2 Ltrs)	15 Ltrs
Specific gravity of Electrolyte on Full Charge	1.245 ± 0.005 g/cc
Colour of carton	Multi Color
Spec of carton	535mm x 235mm x 335mm (L x B x H)
Standard warranty	25 months
Pro-Rated warranty	15 months





VT 115D

**Specification**

Capacity	105Ah C20@27°C
Application	Digital UPS / UPS / etc.
Back-up time in hours with 400W bulb load	1 Hrs 40 Min
Dimension of Battery	mm ± 5%
Length	515 mm
Width	213 mm
Height	260 mm
Weight of battery	Kg ± 5 %
Filled weight	36 Kg
Gross weight	37.5 Kg
Acid Volume (± 2 Ltrs)	12 Ltrs
Specific gravity of Electrolyte on Full Charge	1.245 ± 0.005 g/cc
Colour of carton	Multi Color
Spec of carton	535 mm x 235 mm x 315 mm (Lx B xH)
Standard warranty	30 months
Pro-Rated warranty	12 months



VT 150D

**Specification**

Capacity	140Ah C20@27°C
Application	Digital UPS / UPS / etc.
Back-up time in hours with 400W bulb load	2 Hrs 40 Min
Dimension of Battery	mm ± 5%
Length	505 mm
Width	190 mm
Height	415 mm
Weight of battery	Kg ± 5 %
Filled weight	52 Kg
Gross weight	54 Kg
Acid Volume (± 2 Ltrs)	21 Ltrs
Specific gravity of Electrolyte on Full Charge	1.245 ± 0.005 g/cc
Colour of carton	Multi Color
Spec of carton	530 mm x 220 mm x 485 mm (Lx B xH)
Standard warranty	36 months
Pro-Rated warranty	18 months



VT 120

**Specification**

Capacity	110Ah C20@27°C
Application	Digital UPS / UPS / etc.
Back-up time in hours with 400W bulb load	1 Hrs 45 Mins
Dimension of Battery	mm ± 5%
Length	505 mm
Width	190 mm
Height	415 mm
Weight of battery	Kg± 5 %
Filled weight	49 Kg
Gross weight	51 Kg
Acid Volume (± 2 Ltrs)	23 Ltrs
Specific gravity of Electrolyte on Full Charge	1.245 ± 0.005 g/cc
Colour of carton	Multi Color
Spec of carton	530 mm x 220 mm x 485 mm (Lx B xH)
Standard warranty	36 months
Pro-Rated warranty	18 months



VT 155D

**Specification**

Capacity	152Ah C20@27°C
Application	Digital UPS / UPS / etc.
Back-up time in hours with 400W bulb load	2 Hrs 40 Mins
Dimension of Battery	mm ± 5%
Length	505mm
Width	190mm
Height	415mm
Weight of battery	Kg ± 5 %
Filled weight	51.5 Kg
Gross weight	53 Kg
Acid Volume (± 2 Ltrs)	21 Ltrs
Specific gravity of Electrolyte on Full Charge	1.245 ± 0.005 g/cc
Colour of carton	Multi Color
Spec of carton	530 mm x 220 mm x 485 mm (Lx B xH)
Standard warranty	24 months
Pro-Rated warranty	12 months





VT 160

**Specification**

Capacity	152Ah C20@27°C
Application	Digital UPS / UPS / etc.
Back-up time in hours with 400W bulb load	2 Hrs 45 Mins
Dimension of Battery	mm ± 5%
Length	505 mm
Width	190 mm
Height	415 mm
Weight of battery	Kg ± 5 %
Filled weight	54 Kg
Gross weight	56 Kg
Acid Volume (± 2 Ltrs)	20 Ltrs
Specific gravity of Electrolyte on Full Charge	1.245 ± 0.005 g/cc
Colour of carton	Multi Color
Spec of carton	530 mm x 220 mm x 485 mm (Lx B xH)
Standard warranty	30 months
Pro-Rated warranty	18 months



VT 170

**Specification**

Capacity	160Ah C20@27°C
Application	Digital UPS / UPS / etc.
Back-up time in hours with 400W bulb load	3 Hrs
Dimension of Battery	mm ± 5%
Length	505 mm
Width	190 mm
Height	415 mm
Weight of battery	Kg ± 5 %
Filled weight	56 Kg
Gross weight	58 Kg
Acid Volume (± 2 Ltrs)	20 Ltrs
Specific gravity of Electrolyte on Full Charge	1.245 ± 0.005 g/cc
Colour of carton	Multi Color
Spec of carton	530 mm x 220 mm x 485 mm (Lx B xH)
Standard warranty	36 months
Pro-Rated warranty	18 months



VT 165

**Specification**

Capacity	152 Ah C20@27°C
Application	Digital UPS / UPS / etc.
Back-up time in hours with 400W bulb load	2 Hrs 50 Mins
Dimension of Battery	mm ± 5%
Length	505 mm
Width	190 mm
Height	415 mm
Weight of battery	Kg ± 5 %
Filled weight	54 Kg
Gross weight	56 Kg
Acid Volume (± 2 Ltrs)	20 Ltrs
Specific gravity of Electrolyte on Full Charge	1.245 ± 0.005 g/cc
Colour of carton	Multi Color
Spec of carton	530 mm x 220 mm x 485 mm (Lx B xH)
Standard warranty	36 months
Pro-Rated warranty	18 months



VT 200S

**Specification**

Capacity	200 Ah C20@27°C
Application	Digital UPS / UPS / etc.
Back-up time in hours with 400W bulb load	4 Hrs 10 Mins
Dimension of Battery	mm ± 5%
Length	505 mm
Width	190 mm
Height	415 mm
Weight of battery	Kg ± 5 %
Filled weight	58.5 Kg
Gross weight	60.5 Kg
Acid Volume (± 2 Ltrs)	20 Ltrs
Specific gravity of Electrolyte on Full Charge	1.245 ± 0.005 g/cc
Colour of carton	Multi Color
Spec of carton	530 mm x 220 mm x 485 mm (Lx B xH)
Standard warranty	24 months
Pro-Rated warranty	24 months





VT 200

**Specification**

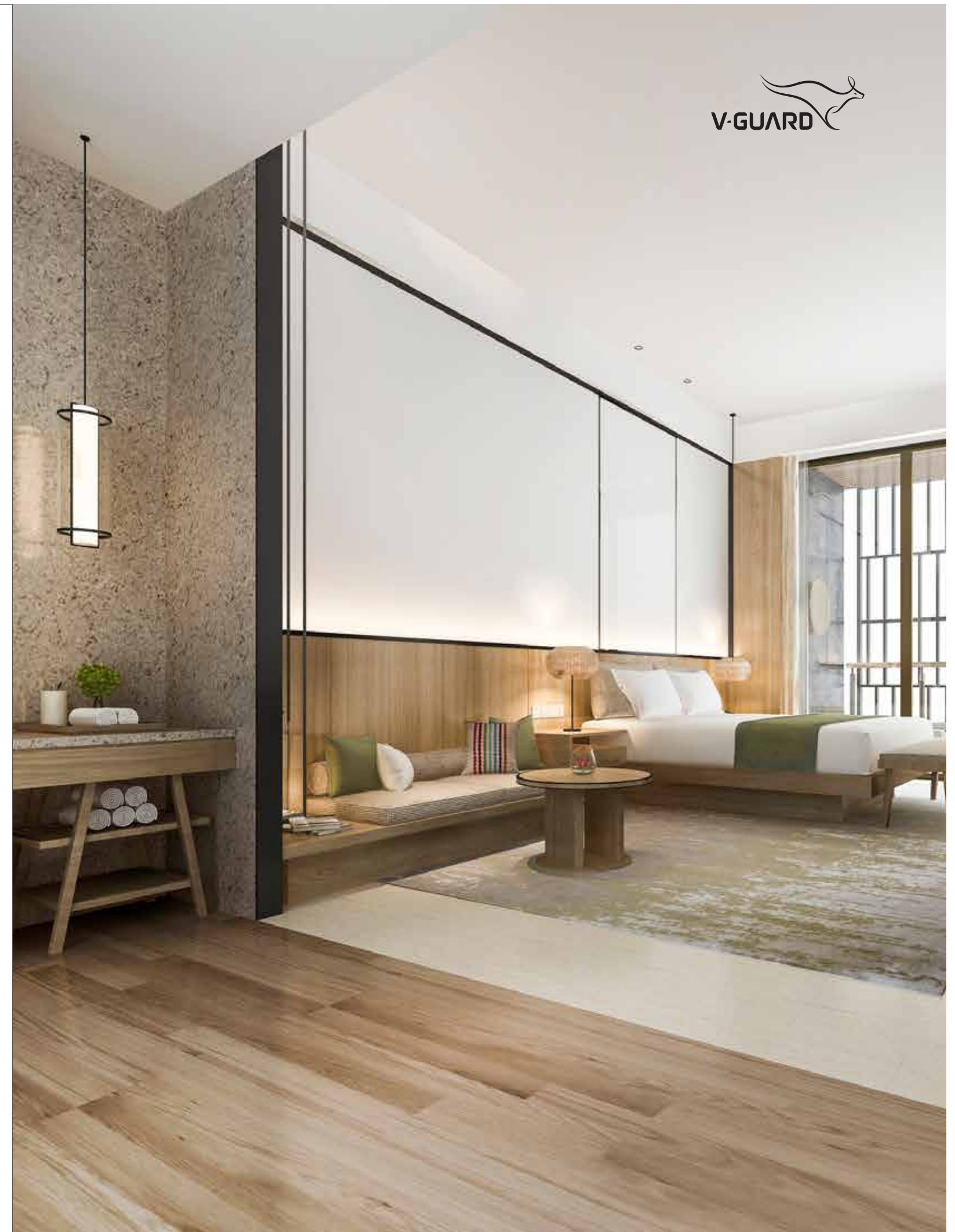
Capacity	200Ah C20@27°C
Application	Digital UPS / UPS / etc.
Back-up time in hours with 400W bulb load	4 Hrs 10 Mins
Dimension of Battery	mm ±5%
Length	505 mm
Width	190 mm
Height	415 mm
Weight of battery	Kg ± 5 %
Filled weight	61 Kg
Gross weight	63 Kg
Acid Volume (± 2 Ltrs)	19 Ltrs
Specific gravity of Electrolyte on Full Charge	1.245 ± 0.005 g/cc
Colour of carton	Multi Color
Spec of carton	530 mm x 220 mm x 485 mm (Lx B xH)
Standard warranty	36 months
Pro-Rated warranty	18 months



VT 250

**Specification**

Capacity	230Ah C20@27°C
Application	Digital UPS / UPS / Inverter etc.
Back-up time in hours with 400W bulb load	5 Hrs
Dimension of Battery	mm ± 5%
Length	505 mm
Width	190 mm
Height	415 mm
Weight of battery	Kg ± 5 %
Filled weight	63 Kg
Gross weight	65 Kg
Acid Volume (± 2 Ltrs)	18 Ltrs
Specific gravity of Electrolyte on Full Charge	1.245 ± 0.005 g/cc
Colour of carton	Multi Color
Spec of carton	530 mm x 220 mm x 485 mm (Lx B xH)
Standard warranty	36 months
Pro-Rated warranty	18 months



# ENJOY UNINTERRUPTED POWER WITH V-GUARD INVERTERS & BATTERIES

